

Increasing Your Business Accuracy

Company Profile



COMPANY PROFILE

We are Index, a Mumbai-based company focused on quality manufacturing of machined components. Our expertise includes shafts, pins, washers, collars, plates, bushes, and blocks. We can customize components according to customer requirements. We work with various materials like stainless steel, carbon steel, alloy steel, brass, copper, aluminum, and polymers.

As an engineering company, we have gradually grown and now operate under the name INDEX AUTOMATS ENGINEERING. Our shop floor spans 4000 sq.ft and is equipped with all necessary facilities.

Our core principle, "QDQ," stands for consistent Quality, timely Delivery, and required Quantity. We tailor our services and solutions to meet the needs of clients, including large corporations, small businesses, and medium enterprises.

Since our inception, the Index Group has prioritized integrity, building strong relationships with customers and the industry, and achieving continuous progress.



OUR STORY

Index Automats Engineering, Established in 2005 as a manufacturing and job- works oriented company, is now transformed into a CNC and VMC machine shop with High quality checking equipments like VMM machine with ISO certified system. Since under the experience and keen knowledge of Mr. Ajit Palkar company has taken a revolutionary update from conventional to fully CNC shops. we are continuously serving since last 20 year to all wide range of industries. our products in almost all the raw materials which is having a property of machining had been successfully machined by the guide lines of Mr. Ajit Palkar. His Experience make us easy to acheive any closed tolerance like 10-13 microns while machining. our process of manufacturing any machining components is 100% error free. we will set the process and make it specialised that it will reduce the chances of rejections is the skilled of Mr. palkar. The hands of experienced and techniks to produced any parts make us specialised in the machining world of CNC and VMC.

Since so far company is continuously growing day by day and expanding the UNITS at different locations. This is all done because of good clientele and there supports in impromising our systems. we have further develop the good vendors for sourcing and pronown suppliers too. Now we have a global brand named as INDEX into the world of manufacturing and exporting the engineering goods.

OUR FOUNDER

Ajit Palkar, a Mechanical Engineering graduate from Mumbai University, has a decade of experience building successful tech startups and specializes in manufacturing precision engineering components.

Entrepreneurial Journey: In 2004, Mr. Ajit Palkar co-founded Index Automats Engineering, leading product development and achieving a 300% customer base growth in two years. In 2010, he transitioned all setups to CNC and VMC machines, revolutionizing precision turned components manufacturing. Under his vision, the company expanded infrastructure and employees, driving further success.

Leadership Style: Ajit's leadership style is collaborative, inspiring teams to innovate and push boundaries. He cultivates a culture of creativity and experimentation, encouraging risk-taking and learning from failure.

Industry Expertise: Ajit is a thought leader in parts development and machine learning, speaking at tech conferences and contributing articles to leading publications. He's recognized as a specialized custom parts manufacturer.



Ajit Palkar
(Founder)

OUR VISION

To be recognized and respected as an organization delivering the Engg parts to the assembly of world class products and value to its customers, our employees and society.



It will be our endeavour to invest our time with the sole purpose of delivering high quality yet cost effective products and services for our customers. We will build profitable partnerships and enduring relationships with our customers. To manufacture the critical parts of our customers by setting up the operations process to zero defect To be a part of premium supplier for all kind of machining materials.

OUR MISSION

GROWTH GRAPH

2004

Incorporation

2010

Update shop floor to high technology with CNC and VMC machines

2017

Added one infratsructure with updated new machines

2018

Getting certified and awards from customers

2019

Updated with fully automatic Bar feeder machines

2020

Updated quality room with Quality Tools

2022

Started outsourcing with certified vendors only

2024

Planning for next growth with teamworks

BUSINESS SERVED



Automobile



Aerospace



Robotics



Sugar Factories



Turbine Machinery



Industrial Automations



Power Generations



Water & Wind Technology

BUSINESS SERVED



Valves industries



Molding Parts



Oil & Gas



Fire & Safety



Surgical Industries



Customised Fasteners



**Currency Counting
Machines**

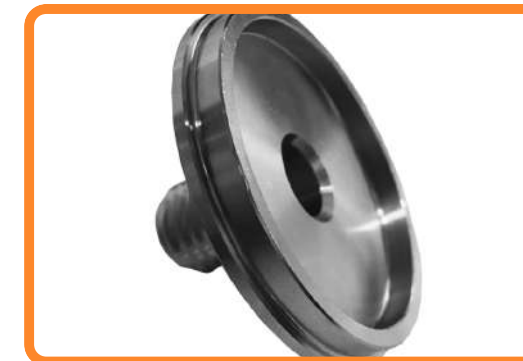


Spray Technology

PRODUCT PORTFOLIO

STAINLESS STEEL TURNED PARTS

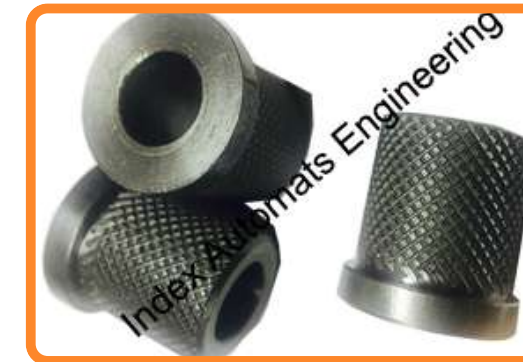
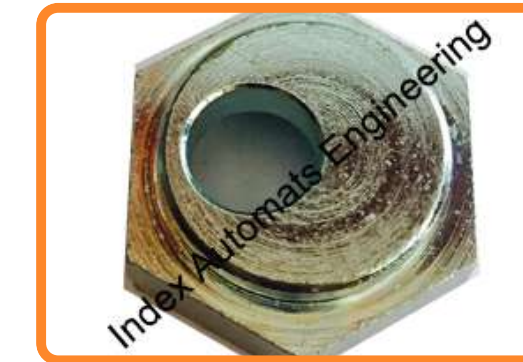
We like to work with the material in stainless steel grade. we produced high precision machine parts in all the grades for stainless steel like 303 304,316. While machining this products we keep keen attention over deburring and specified tolerances.



PRODUCT PORTFOLIO

MILD STEEL TURNED PARTS

We are specialized in manufacturing of Mild Steel Parts in designs. We have strong command in machining of this material as well as its variant grade like En series. While machining we keep our specified tolerance to achieve the final size easily.



PRODUCT PORTFOLIO

ALUMINIUM TURNED PARTS

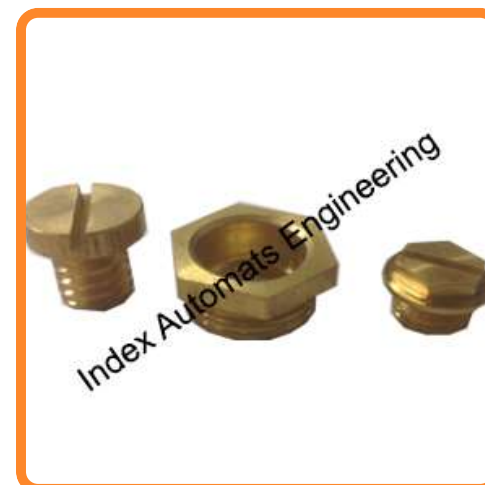
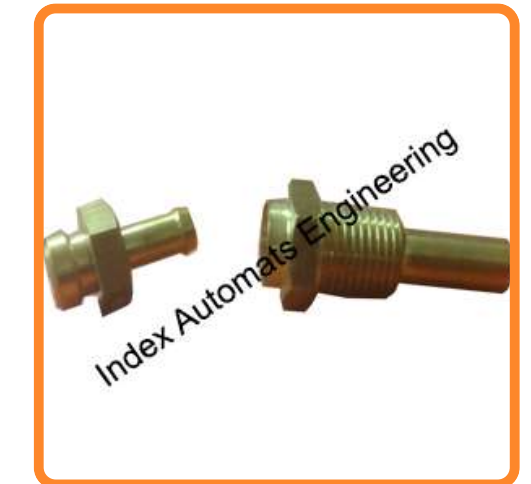
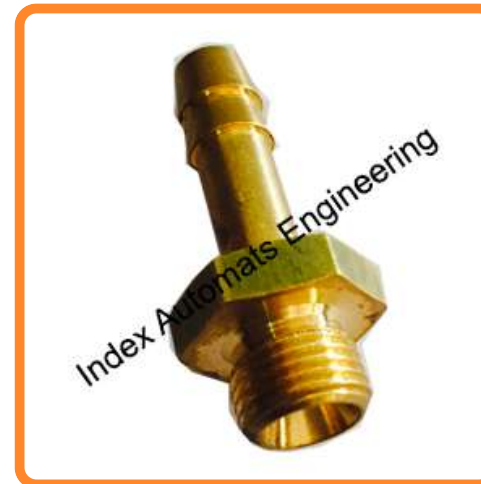
We have developed the unique machining process for this range of material. Mostly this range is required in Lighting Industries and Architectural interior/ exterior products. We give an attractive look for these parts after plating / anodizing.



PRODUCT PORTFOLIO

BRASS TURNED PARTS

We feel very privileged to work on this material since this has been much more competitive, machinable and much in demand in producing finished goods from extruded as well as casted products. We mostly supply this product to Gas Industry, Chemical Industry, Air Pneumatic works, Electrical / Cable works and Fluid Industries. We also manufacture brass fittings for hardware products and no bar for material grade.



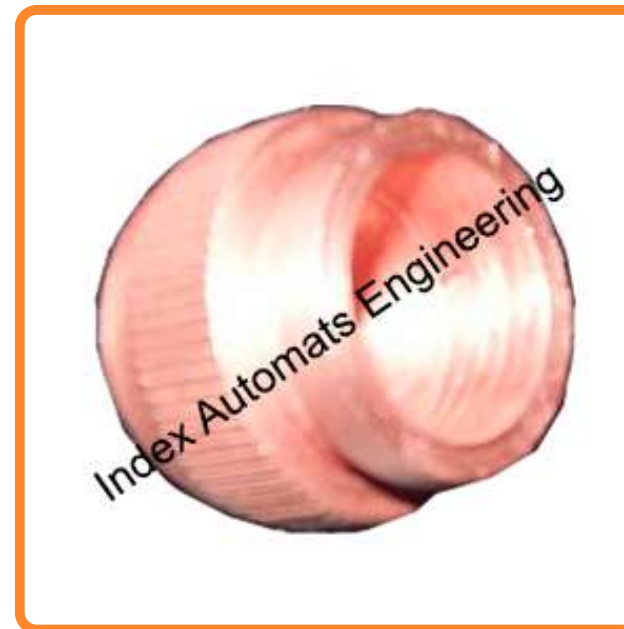
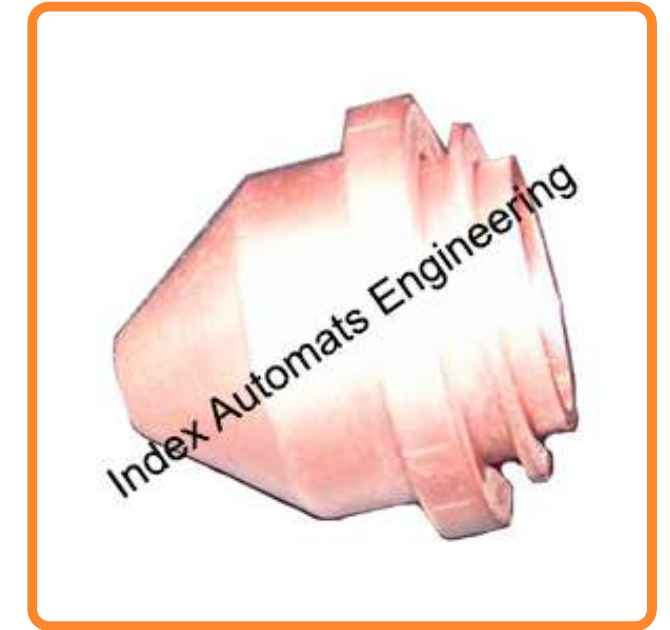
PRODUCT PORTFOLIO

COPPER TURNED PARTS

These are mostly in different nozzles, guns, jet, plasma manufacturing. we are familiar with all copper electrode grade materials.

These are useful in gas, plasma industries, nozzles. Mostly applicable in high heat desipation area.

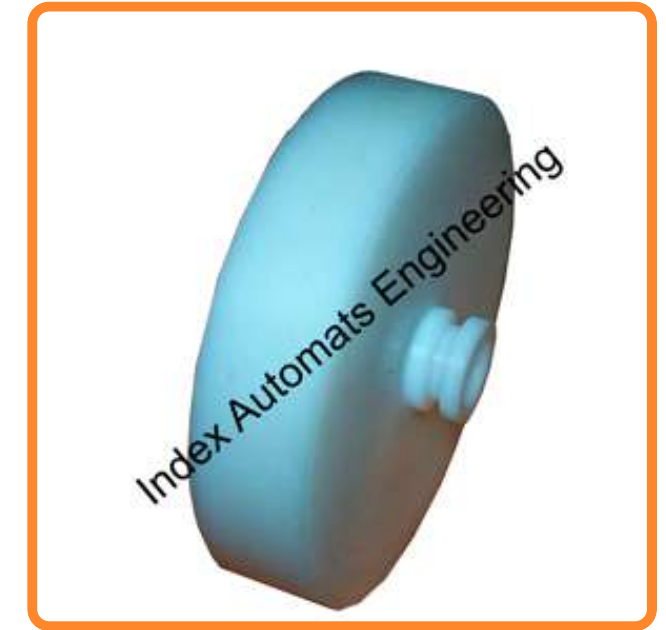
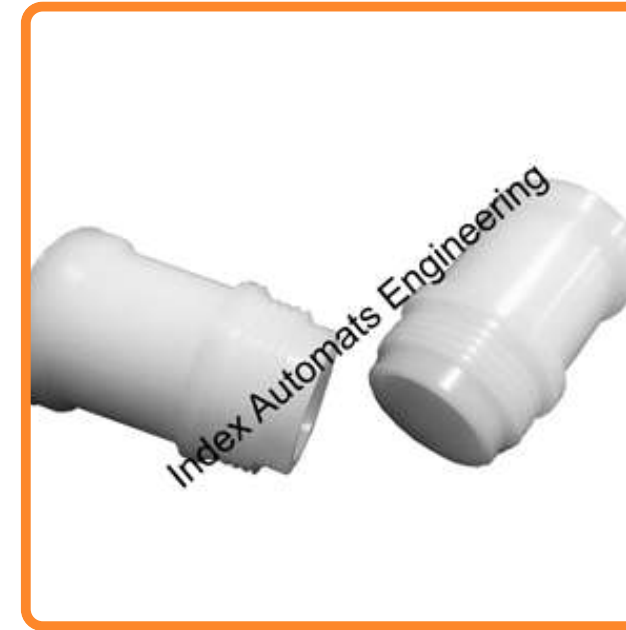
We also works in ETP grade for electrical spacers , bus bars and other copper fittings which will be commonly used in electrical applications.



PRODUCT PORTFOLIO

POLYMER TURNED PARTS

These are the turned parts mostly made up of Delrin, Plastic, PTFE, HDPE. Teflon & Delrin parts are easy for machining but difficult to achieve dimensional accuracy due to deformation and high shrinkage property. So before machining you must know about the shrinkage ratio. Polymer turned parts are useful in printer industries, electric, oven industries & automobile industries. These are roller, teflon bushing, delrin pulleys, gears, washers, spacers, bearing rollers, sealants etc.



PRODUCT PORTFOLIO

CUSTOMIZED ENGINEERING PARTS

These are the parts which we will develop on the request of our customer's requirements. It might be any kind of assembly or sub part which will be useful in any industries. It might be something challenging that the customer is facing the problems with his existing vendors and he wants that to appoint us considering our working strength & continuous quality output. We are ready to develop that kind of special parts which is not our line of action.



PRODUCT PORTFOLIO

PRECISION TURNED PARTS

We are one of the leading manufacturer for Precision Turned Parts and Precision Turned Components. By using Precision Machine and Precision Measuring Instruments, the prices are very competitive than other manufacturers in India. Quality of CNC Turned Parts and Precision Turned components remains same throughout the lot. We have customized tooling as per the designed parts to reduce the cost of Turned Parts. There is no limitation of raw material to produce Precision Turned components.



PRODUCT PORTFOLIO

GEAR AND TIMER WHEEL

The gears are mostly into Mild steel, stainless steel, brass and Aluminum. Gear teeth are as per customer requirement. We do all kind of gears with precise Bore and runout.



WHY INDEX



Our solution is the answer for your parts criticalness.

Producing the parts with zero defect in production by specialise the operation process sequences.

Achieving the quality by simplifying its process to satisfy the customers.

Applying filters on process and making the SOP for every parts from raw material to finished goods.

We delivers the material on committed time with final reports and material Mill test certificates as well as third party certificates.

material quality inspections with standard instruments and VMM machine with fully equipped quality room.

packing as per customers requirements and depends on parts too.

We strive to produce quality products while being competitive and efficient.

Ensuring continuous training to our employees

Motivating and involving all the employees in achieving our overall goals.

Ultimately we looks forward to improve our customers accuracy by continuos growth for both.

CLIENTELE

TK INDIA PRIVATE
LIMITED



SCHIEDERWERK

MARINE ENGINEERING &
EQUIPMENT COMPANY



FOR INQUIRIES, CONTACT US.



ajit@indexengg.com / salesindex@gmail.com



+91 9820569568 / 022 42665846 /
+91-22-28965846



A-114, Diamond Industrial Estate,
W.E.Highway, Toll Naka, Ketki Pada Road,
Dahisar (E), Mumbai - 400068,
Maharashtra, India.

VAT TIN- 27130506944 WEF 01/04/06
GSTIN- 27AKSPP8481E1ZG
PAN- AKSPP8481E
MSME- UDYAM-MH-18-0008562 (MICRO)

